

Sonata No. 1

J. S. Bach
arr. Hans Lewitus

Andante

3

8

Presto

14

17

Allegro

4

8

12

15

18

21

24

27

30

33

37

41

44

47

Adagio

Adagio

Measures 1-13: A single melodic line in G-flat major (two flats) and common time. The tempo is marked Adagio. The music features a variety of note values including eighth, sixteenth, and thirty-second notes, often beamed together. Trills are indicated with a 'tr' symbol and a wavy line. Slurs are used to group phrases of notes. The piece concludes with a whole note chord.

Menuett I

Measures 1-9: A single melodic line in G-flat major (two flats) and 3/4 time. The tempo is marked with a trill symbol. The music is characterized by frequent sixteenth-note runs. It begins with a repeat sign and ends with a repeat sign and a final chord.

Menuett II

Measures 1-24: A single melodic line in G-flat major (two flats) and 3/4 time. The tempo is marked with a trill symbol. The piece consists of continuous sixteenth-note patterns. It begins with a repeat sign and ends with a repeat sign and a final chord.

D.C. Menuett I

Measures 24-28: A single melodic line in G-flat major (two flats) and 3/4 time. The tempo is marked with a trill symbol. This section is a repeat of the first measure of Menuett I, ending with a repeat sign and a final chord.

Sonate II

J. S. Bach
arr. Hans Lewitus

1 Adagio ma non tanto

4

7

9

12

15

17

20

23

25

28

Allegro

4

A musical score for a single melodic line in B-flat major, spanning measures 7 to 52. The notation is on a single staff with a treble clef. The key signature has two flats (B-flat and E-flat). The time signature is not explicitly shown but appears to be 4/4 based on the note values. The melody is composed of eighth and sixteenth notes, often beamed together in groups of four or eight. There are several slurs indicating phrases. Measure numbers 7, 10, 13, 16, 19, 21, 24, 27, 31, 34, 37, 40, 44, 48, and 52 are printed at the beginning of their respective staves. The melody concludes with a sharp sign (#) on the final note in measure 52.

6
55

59

62

66

69

1 Andante 6

12

16

20

25

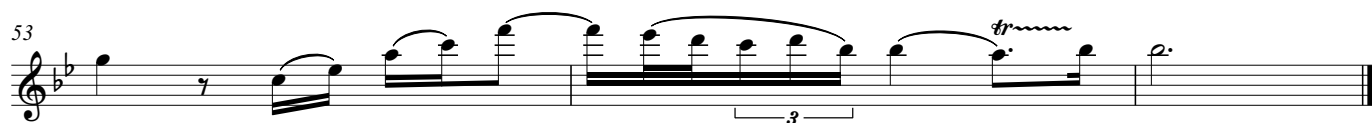
30

34

36

40

45



8
42

45

49

54

58

62

66

70

74

77

80

83

Sonate III

J. S. Bach
arr. Hans Lewitus

Adagio ma non tanto

3

5

6

8

11

13

15

17

19

Allegro

8

14

19

25

10
30

40

45

51

56

63

68

73

79

Siciliano

5

10

16

19

22

27

32

Allegro assai

3

5

13

17

21

25

31

35

39

43

47

51